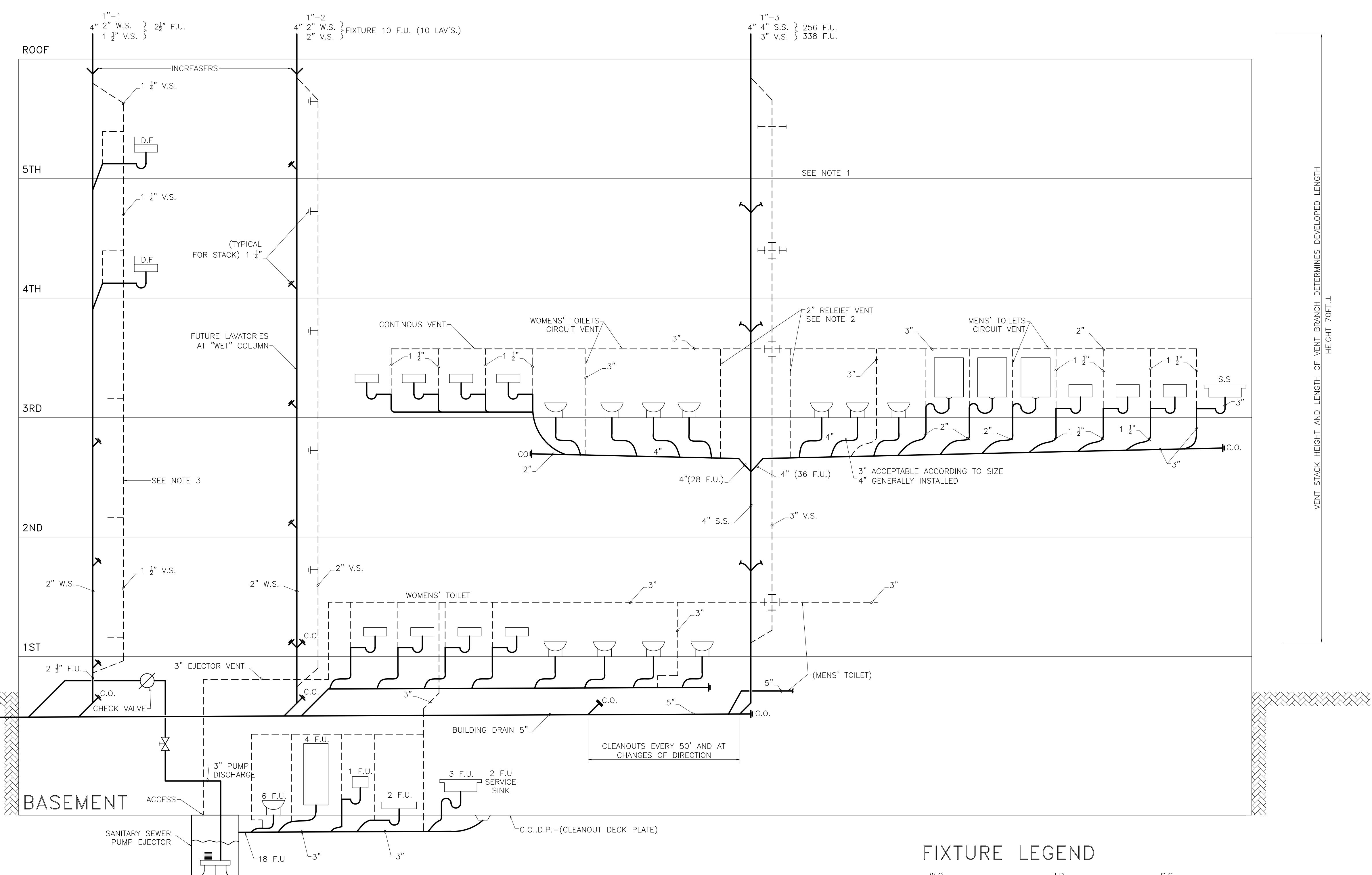
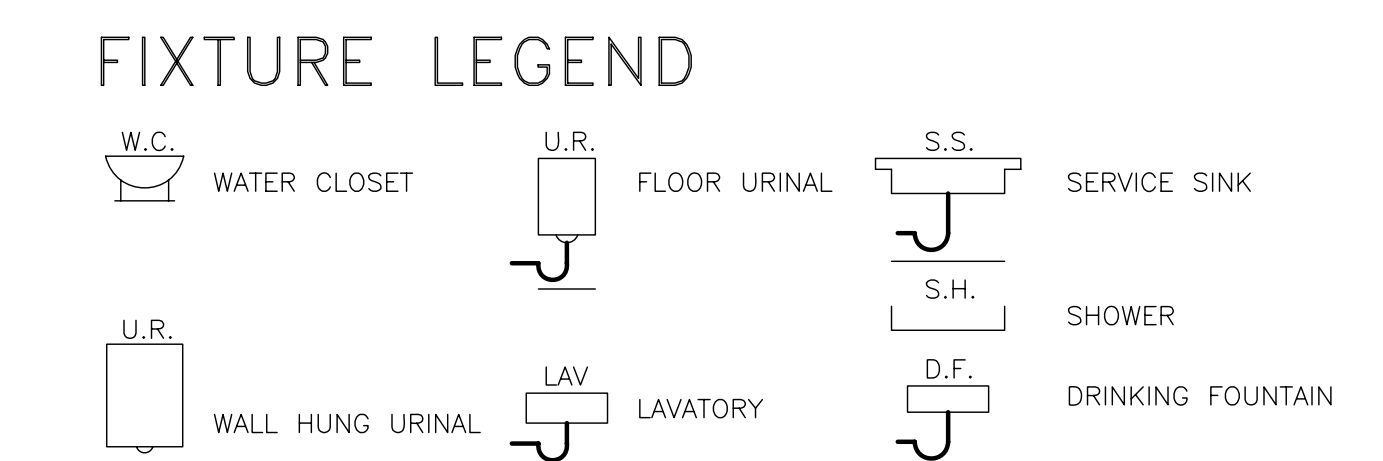


General Notes



GENERAL NOTE:
 1. CIRCUIT VENTS SERVE BRNCH SOIL LINES, BUT SOME CODES REQUIRE CONTINUOUS VENTING (INDIVIDUAL FIXTURE VENTS). THE HOUSE TRAP AND FRESH-AIR INLET ARE OMITTED FROM BUILDING DRAIN.
 SHEET NOTES:-
 1. RELIEF VENT NOT REQUIRED ON TOP FLOOR
 2. MEN'S AND WOMEN'S TOILET ON THIRD FLOOR ARE TYPICAL AND WOULD BE REPEATED ON FIRST, SECOND, FOURTH AND FIFTH.
 3. DRINKING FOUNTAINS ON FIFTH AND FOURTH FLOORS WOULD BE REPEATED ON FIRST, SECOND, AND THIRD FLOORS.



CALCULATIONS

64 F.U. X 4 FL. =	256 F.U. (4" S.S.)
1ST FLOOR =	64 F.U.
BASMENT =	18 F.U.
	<u>338 F.U. (3" VS)</u>

VENT STACK HEIGHT AND LENGTH OF VENT BRANCH DETERMINES DEVELOPED LENGTH HEIGHT 70FT.±

No.	Revision/Issue	Date

Firm Name and Address
PLUMBING CAD SERVICES, LLC
 Phone : (925) 465-0345 / (925) 216-4942 Fax: (925) 886-0346

Project Name and Address
 PCS OFFICE CALIFORNIA
 SANITARY RISER DIAGRAM

Project	Sheet
Date 1/20/2006	P5.2
Scale NTS	

1/20/2006